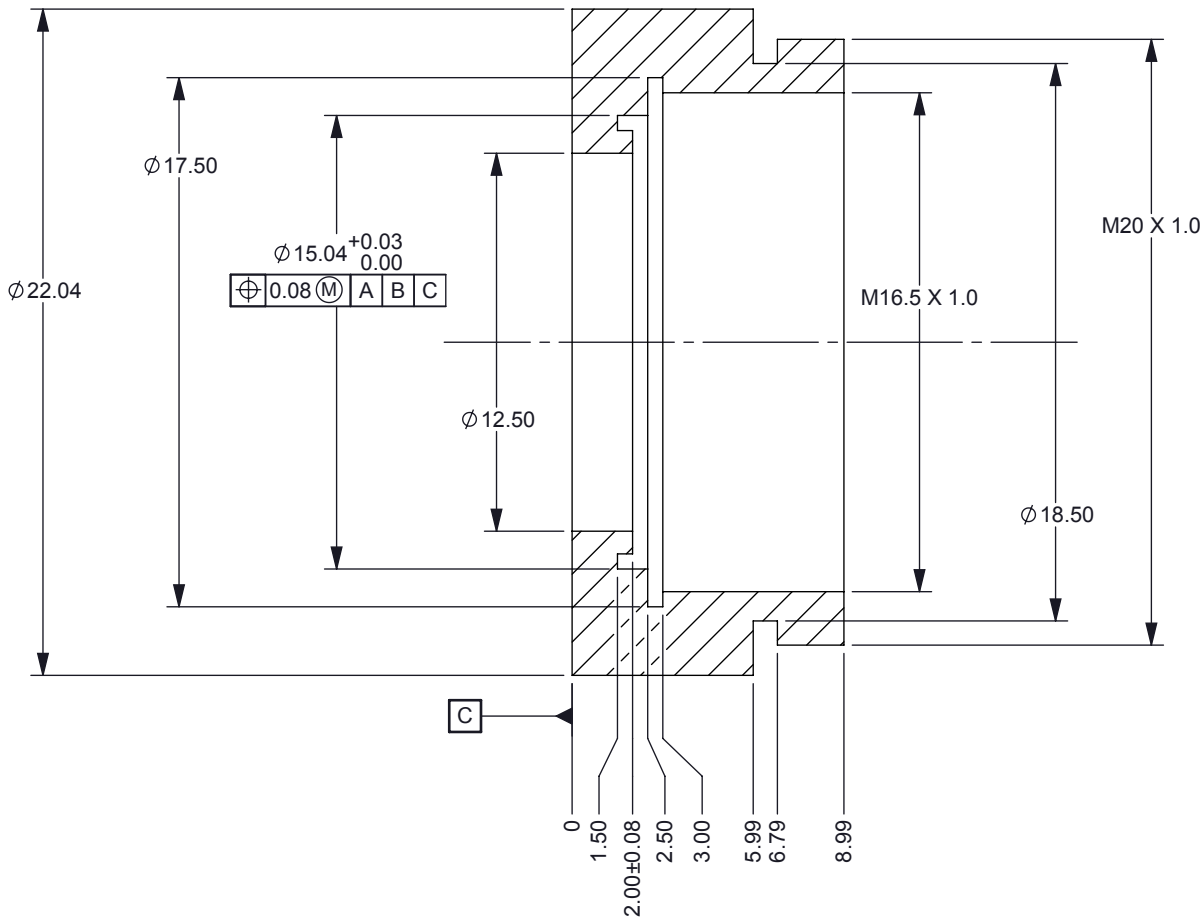
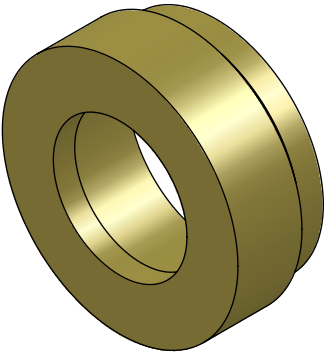


- NOTES: UNLESS OTHERWISE SPECIFIED:
1. MATERIAL: 6061-T6 ALUMINUM
 2. LIGHT BEADBLAST EXTERIOR SURFACES ONLY (MATTE FINISH); MASK INTERNAL FEATURES AND THREADING TO ENSURE TOLERANCES ARE HELD.
 3. FINISH: ANOPLATE ANOBLACK EC PROCESS. ALTERNATE BLACK ANODIZING PROCESSES NOT CONSIDERED AN EQUIVALENT

REVISIONS			
REV	DESCRIPTION	DATE	BY
A	ECO #2136196 - INITIAL RELEASE	9/20/13	RDR



SECTION A-A

